

1310 Stage Rd (Rte. 2)  
Etna, ME 04434

**Call 207-269-2800 for information**

1520 Alfred Rd (Rte. 111)  
Lyman, ME 04002

247 Main Rd (Rte. 1A)  
Holden, ME 04429

[www.hillviewminibarns.com](http://www.hillviewminibarns.com)

242 Middle Rd (Rte. 9)  
Sabattus, ME 04280

158 Lewiston Rd (Rte. 100)  
Gray, ME 04039

[info@hillviewminibarns.com](mailto:info@hillviewminibarns.com)

# Chicken Coops

### Price subject

**6x8 Chicken Coop--\$2,875.00**



- 30 year SmartSide® painted – choose from 16 colors
- 2x4 16" o.c. - 2 pressure treated 4x4 skids
- 2-single pane hinged tilt out window with wire mesh
- Single entry door 32"x73.5"
- 14"x16" Chicken door with ramp
- 4-Hole nesting box

**6x10 Chicken Coop--\$3,125.00**



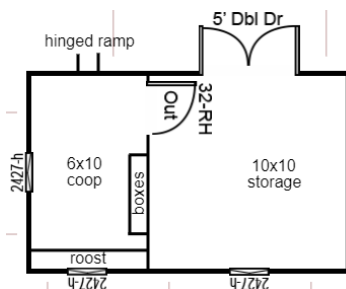
- 30 year SmartSide® painted – choose from 16 colors
- 2x4 16" o.c. - 2 pressure treated 4x4 skids
- 2-single pane hinged tilt out window with wire mesh
- Single entry door 32"x73.5"
- 14"x16" Chicken door with ramp
- 4-Hole nesting box

**8x10 Chicken Coop--\$3,465.00**



- 30 year SmartSide® painted – choose from 16 colors
- 2x4 16" o.c. - 3 pressure treated 4x4 skids
- 2-single pane hinged tilt out window with wire mesh
- Single entry door 32"x73.5"
- 14"x16" Chicken door with ramp
- 4-Hole nesting box

**10x16AF Shed / Coop--\$5,595.00**



- 30 year SmartSide® painted – choose from 16 colors
- 2x4 16" o.c. - 5 pressure treated 4x4 skids
- 3-single pane hinged tilt out window with wire mesh
- 5' wide double doors
- Single entry door 32"x73.5" (inside)
- 14"x16" Chicken door with ramp
- 4-Hole nesting box
- Offers 6x10 coop & 10x10 storage

**Depending on material prices, there may be a lumber surcharge added on all posted prices. Please call for current pricing.**

**Other sizes and models are available.** Ask a sales rep for more information.

Price subject to change—Jan. 2024